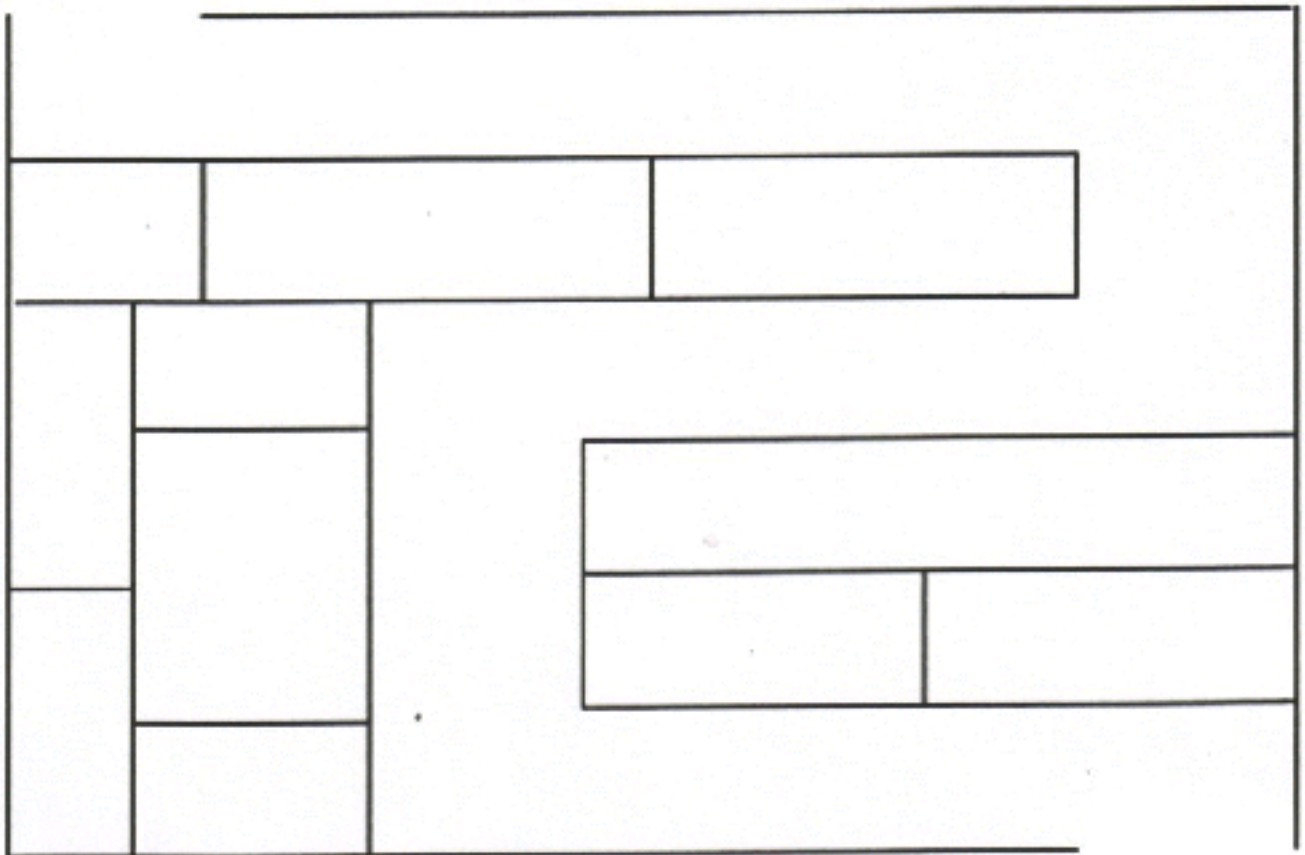


The Long, Hard Journey to Bethlehem



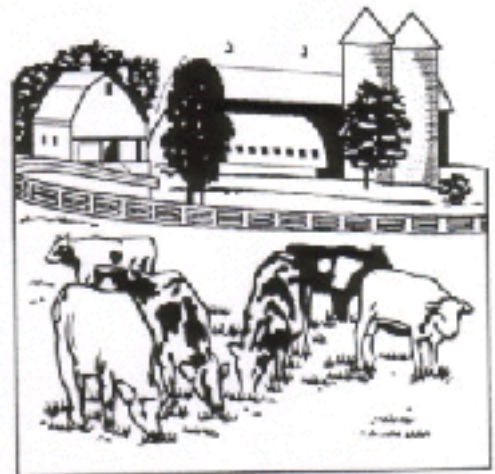
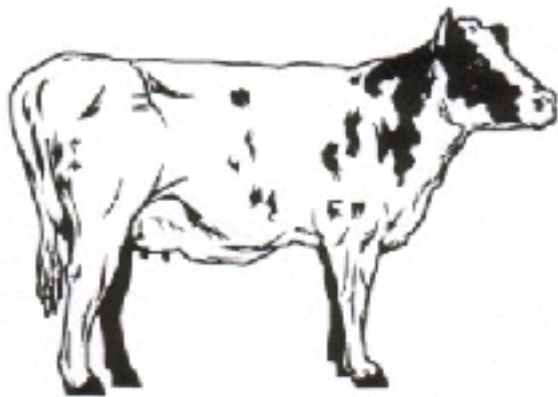
Teachers, have the children draw a line from the picture of Mary and Joseph at the top of the page, through the maze, to the picture of Mary and Joseph and baby Jesus at the bottom of the page. Read to them the story of the long journey they had to make to Bethlehem.

Go, Wash In The River Seven Times



Teachers, have the children find the water on the coloured card (appendix 1). Have them stick the water onto the picture and cut the slit in the water as shown - the thicker lined part - going right through the page. It is best to wait until the paste is dry so tell the story of Naaman washing in the river while waiting for it to dry. Cut Naaman out and slip him into the water slit. The children can make him dip under water.

Match . . .



Teacher, please help the children to draw a line from the animal to its home. Have them use a different colour for each one. Discuss animals and where they live and where people can live - in a house, flat caravan etc.